

# LED NEON BORDER LIGHT

**TRONIX**

2 year  
warranty

June  
2010

LED Neon Borderlight is a high quality, by Tronix developed product and replacement for conventional neon lighting and can direct compete with the brightness of glass neon tube. The advantages are tide lines with a visual range of up to 1000 meters, shock prove, almost unbreakable, easy and cheap mounting, low power consumption, safe and a long life cycle. Mounting is possible with or without aluminium channel. For short lines on a flat surface it is not necessary to use a channel. In this case the connections can be hidden under the tube. When mounted on channels it is possible to power 30 meters with one power supply and hide the wires in the channel.

**TRONIX HEADOFFICE**



**SHOPPINGMALL OSS**



**ARCHED SHOP WINDOW**



**TRIANGLE SHOP WINDOW**



**OFFICE BUILDING**

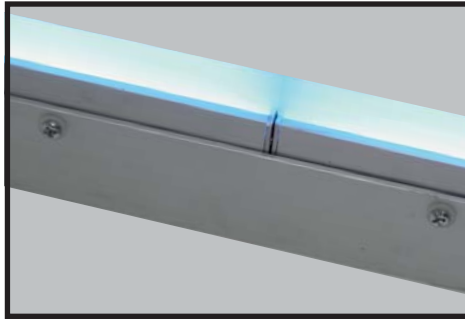


# LED NEON BORDER LIGHT

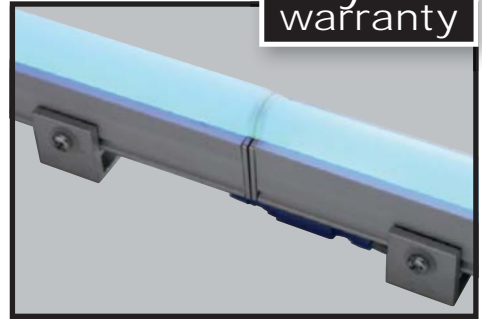
2 year warranty



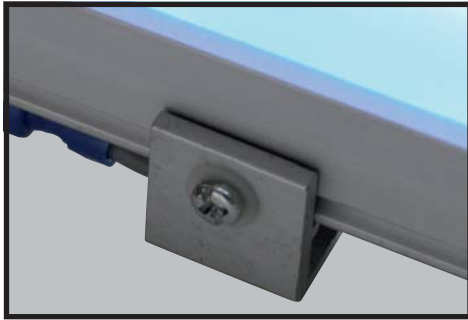
Border Light 24V with mounting channel



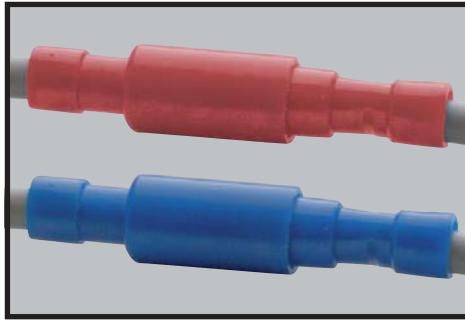
Connectors and wires hidden in the channel



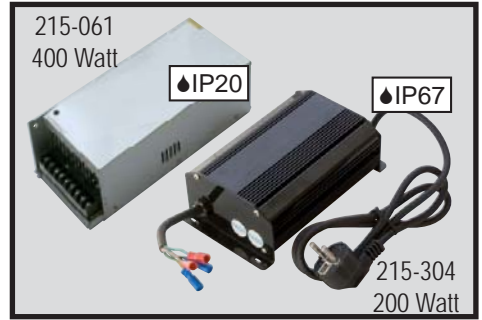
The connectors can be hidden under the tube



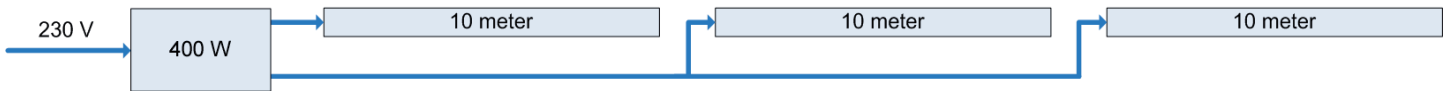
Mounting bracket with screw



Easy connections to make extension cables by yourselves



In- and outdoor power supplies available



The schematic shows how you can power 30 meters Border Light with one 400 Watt powersupply. The powercable is easily hidden inside the channel

Order code	Item	Voltage	IP rate	Color	Dimensions	Power consumption	Units to connect
080-041	BDL-400-24V-W	24V	IP67	white	23,5x26,6x400 mm	3,0W	Max 22
080-042	BDL-400-24V-B	24V	IP67	blue	23,5x26,6x400 mm	3,0W	Max 22
080-043	BDL-400-24V-G	24V	IP67	green	23,5x26,6x400 mm	3,0W	Max 22
080-044	BDL-400-24V-R	24V	IP67	red	23,5x26,6x400 mm	2,7W	Max 22
080-045	BDL-400-24V-Y	24V	IP67	yellow	23,5x26,6x400 mm	2,7W	Max 22
080-061	BDL-600-24V-W	24V	IP67	white	23,5x26,6x600 mm	5,2W	Max 15
080-062	BDL-600-24V-B	24V	IP67	blue	23,5x26,6x600 mm	5,2W	Max 15
080-063	BDL-600-24V-G	24V	IP67	green	23,5x26,6x600 mm	5,2W	Max 15
080-064	BDL-600-24V-R	24V	IP67	red	23,5x26,6x600 mm	4,3W	Max 15
080-065	BDL-600-24V-Y	24V	IP67	yellow	23,5x26,6x600 mm	4,3W	Max 15
080-031	BDL-1000-24V-W	24V	IP67	white	23,5x26,6x1000 mm	8,7W	Max 10
080-032	BDL-1000-24V-B	24V	IP67	blue	23,5x26,6x1000 mm	8,7W	Max 10
080-033	BDL-1000-24V-G	24V	IP67	green	23,5x26,6x1000 mm	8,7W	Max 10
080-034	BDL-1000-24V-R	24V	IP67	red	23,5x26,6x1000 mm	7,3W	Max 10
080-035	BDL-1000-24V-Y	24V	IP67	yellow	23,5x26,6x1000 mm	7,3W	Max 10
080-057	BDL-CHAN-3,5M	na	na	na	3,5 meters	na	na
215-061	SPS-24V-400W	24V	IP20	na	na	400W	Up to 30 meters
215-304	SPS-24V-200W	24V	IP67	na	na	200W	Up to 13 meters
080-110	BDL-BRACK	2 pcs bracket with screw for 1 pcs borderlight					
080-111	BDL-ENDCAP	10 channel endcap in pvc bag					
080-112	BDL-AMP-CON	5 set 4mm amp connector in pvc bag					