

# WALL WASHERS



*L-WWLL-1200B* 24 Volt 120 cm high-power wall washer made of high quality aluminum and equipped with 36 high power RGB LED's. Effective range approximately 10 meters. DMX compatible. Power consumption 44 Watt.



*L-WWLL-600B* 24 Volt 60 cm high-power wall washer made of high quality aluminum and equipped with 18 high power RGB LED's. Effective range approximately 10 meters. DMX compatible. Power consumption 22 Watt.



*L-WWLL-305B* 24 Volt 30,5 cm high-power wall washer made of high quality aluminum and equipped with 9 high power RGB LED's. Effective range approximately 10 meters. DMX compatible. Power consumption 11 Watt.



*L-WWLL-305B 230V* 230 Volt 30,5 cm high-power wall washer made of high quality aluminum and equipped with 9 high power RGB LED's. Effective range approximately 10 meters. DMX compatible. Power consumption 11 Watt.



*L-WWLL-305-12 24V* 24 Volt 30,5 cm high-power wall washer made of high quality aluminum and equipped with 12 high power 3W Super Bright RGB LED's. Effective range approximately 20 meters. DMX compatible. Available with 40° and 60° lenses. Limited stock.  
On special order this wallwasher is also available as a 50 or 100 cm model with 24 or 48 RGB, warm white, white, blue, green red or yellow LED's.

## WALL WASHER OUTDOOR

IP65



190-076

L-WWLL-6R 24 Volt high-power round wall washer made of high quality aluminum and equipped with 6 high power RGB LED's. Effective range approximately 10 meters. DMX compatible. Power consumption 8 Watt. Driver included.

## WALL WASHER UNDER WATER

IP68



200-030

L-UWSP-A6 Under water round wall washer made of high quality stainless steel, equipped with 6 high power RGB LED's and waterproof up to 5 meters. Effective range approximately 10 meters. Driver included.

## FOUNTAIN LIGHT

IP68



200-040

L-FNTS-9 Fountain light with 9 high power LED's. The hole in the middle has a diameter of 38 mm. Driver included.

## WALL WASHER OUTDOOR

IP65

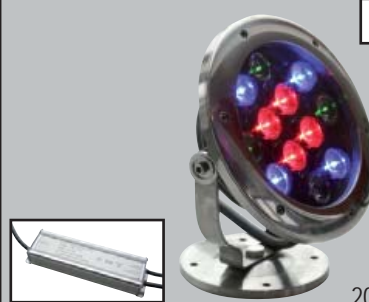


190-081

L-WWLL-18R 24 Volt high-power round wall washer made of high quality aluminum and equipped with 18 high power RGB LED's. Effective range approximately 10 meters. DMX compatible. Power consumption 22 Watt. Driver included.

## WALL WASHER UNDER WATER

IP68



200-035

L-UWSP-A12 Under water round wall washer made of high quality stainless steel, equipped with 12 high power RGB LED's and waterproof up to 5 meters. Effective range approximately 10 meters. Driver included.

## FOUNTAIN LIGHT

IP68



200-041

L-FNTS-12 Fountain light with 12 high power LED's. The hole in the middle has a diameter of 52 mm. Driver included.

## DMX CABLE



190-204

L-WWLL-DMX DMX cable for high power WWLL models.

## DMX EXTENSION CABLE



190-202

L-WWLL-EXT-DMX DMX extension cable 2 meters for high power WWLL models.

## DMX T-CONNECTOR



190-206

L-WWLL-T-DMX DMX t-connector for high power WWLL models.

## SWITCHING POWER SUPPLY

IP67



215-070 (60W)  
215-075 (96W)  
215-080 (150W)

L-SPS-24-60W AMP 24 Volt DC, 60 Watt switching block type power supply with 4 mm AMP connectors.

L-SPS-24-96W AMP 96 Watt with dual output.

L-SPS-24-150W AMP 150 Watt with dual output.

## POWER SUPPLY

All professional Wall Washers come without 24 Volt power supply. The power of the used power supply has to be at least 140% of the total power consumption of all the connected Wall Washers.

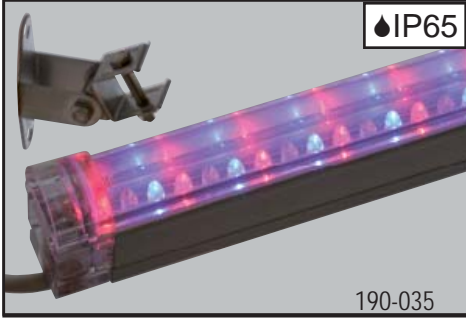
### WALL WASHER TUBE INDOOR



190-025(100cm/230V)  
190-026(100cm/24V)  
190-027(37½cm/24V)

L-WWGL 24 Volt RGB wall washer with a length of 37½ or 100 cm. Effective range approximately 2,75 meters. Maximum 10 (100 cm) tubes or 30 (37½ cm) tubes can be linked. The 100 cm version is also available in 230 Volt of which a maximum of 30 can be linked.

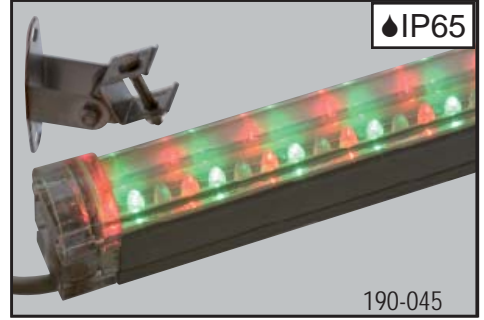
### WALL WASHER TUBE OUTDOOR



190-035

L-WWML-175 24 Volt RGB wall washer with a length of 17½ cm. Effective range approximately 4 meters. Made of aluminium with an acryl cap. A maximum of 50 tubes can be linked. Stainless steel bracket included.

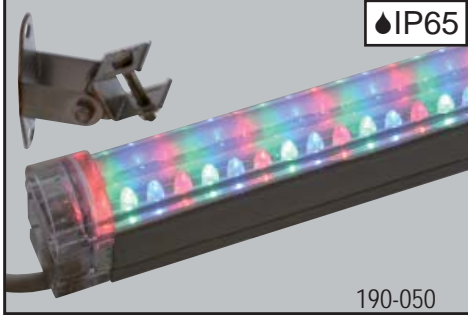
### WALL WASHER TUBE OUTDOOR



190-045

L-WWML-610 24 Volt RGB wall washer with a length of 61 cm. Effective range approximately 4 meters. Made of aluminium with an acryl cap. A maximum of 18 tubes can be linked. Stainless steel bracket(s) included.

### WALL WASHER TUBE OUTDOOR



190-050

L-WWML-1000 24 Volt RGB wall washer with a length of 100 cm. Effective range approximately 4 meters. Made of aluminium with an acryl cap. A maximum of 12 tubes can be linked. Stainless steel bracket(s) included.

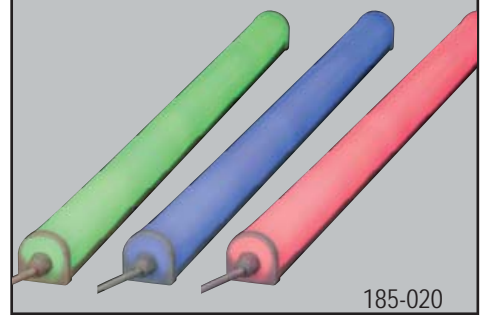
### WALL WASHER TUBE OUTDOOR



190-052

L-WWML-1000-B 24 Volt wall washer with blue LED's and a length of 100 cm. Effective range approximately 4 meters. Made of aluminium with an acryl cap. A maximum of 12 tubes can be linked. Stainless steel bracket(s) included.

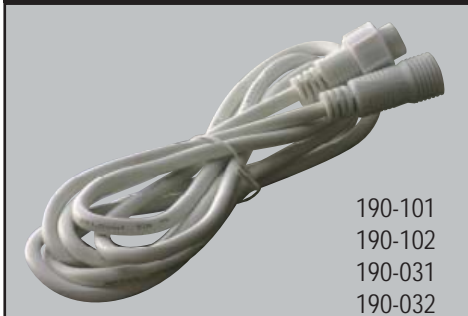
### WALL WASHER TUBE INDOOR



185-020

L-HDL-5036 230 Volt 7 color indoor wall washer with a length of 100 cm. Effective range approximately 2 meters.

### EXTENSION CABLES



190-101  
190-102  
190-031  
190-032

L-WWML-EXT1.5 1½ m for 24 Volt models. Black.  
L-WWML-EXT3 3 m for 24 Volt models. Black.  
L-WWGL-EXT1.5 1½ m for 230 Volt models. White.  
L-WWGL-EXT3 3 m for 230 Volt models. White.

### CONTROLLER



214-013

L-CNTR-ML-6 Controller with power supply for 24 Volt WWGL and WWML wall washer tubes. Up to 6 ML1000 or 10 ML610 tubes can be connected to one controller. Powersupply included.

### CONTROLLER



214-014

L-CNTR-ML-24 Controller for 24 Volt WWGL and WWML wall washer tubes. Up to 24 ML1000 or 38 ML610 tubes can be connected to one controller. Powersupply not included.

### CONTROLLER



230 Volt

214-040

L-CNTR-171-24V Controller for 24 Volt WWGL and WWML wall washer tubes. Up to 30 ML1000 or 48 ML610 tubes can be connected to one controller. With dimmer function.

### INDOOR TUBE CONTROLLER



230 Volt

214-003

L-CNTR-HDL Controller for 230 Volt indoor wall washer tubes. Fits directly to the tube. Extension cables are available. Up to 30 tubes can be connected to one controller.

## CONTROLLER



214-100  
214-101

## CONTROLLER



214-102

## FADER PANEL



214-103

L-CNTR-LAG12 12 Volt, 200 watt 8 channel controller with remote control and DMX.

L-CNTR-LAG24 24 Volt, 300 watt 8 channel controller with remote control and DMX.

L-CNTR-LAG24-M 24 Volt, 100 watt 2 channel controller with remote control and DMX.

L-FAD-PAN6 Fader panel with DMX in and out and remote control.

## CONTROLLER



230 Volt

214-040

## CONTROLLER



214-035

L-CNTR-171-24V Controller for 24 Volt WWGL and WWML wall washer tubes. Up to 30 ML1000 or 48 ML610 tubes can be connected to one controller. With dimmer function.

L-CNTR-SM Controller for demonstrating WWLL and UWSP wall washers. Power supply is included.

